



A GUIDE TO TREATING YOUR CONDITION WITH SKYRIZI

Skyrizi[®] COMPLETE

Please see **Use and Important Safety Information** throughout and on page 12.

Please see full **Prescribing Information**, including **Medication Guide**, at https://www.rxabbvie.com/pdf/skyrizi_pi.pdf and discuss with your doctor.

To learn about AbbVie's privacy practices and your privacy choices, visit <https://abbv.ie/corpprivacy>.


Skyrizi[®]
risankizumab-rzaa



YOUR DOCTOR HAS PRESCRIBED SKYRIZI FOR YOUR MODERATE TO SEVERE ULCERATIVE COLITIS (UC)

Starting a new treatment is a big step. You won't have to do this alone. **The more you know about your prescribed treatment plan, the better prepared you'll be to start and stay on track with SKYRIZI.**

TABLE OF CONTENTS

- Treating moderate to severe UC with SKYRIZI** 3
- Skyrizi Complete Nurse Ambassador** 4
- Here to help you save** 5
- Skyrizi Complete App** 6
- Understanding your SKYRIZI treatment** 7
- Understanding a complex condition** 8
- Who is at risk?** 9
- UC symptoms** 10
- The immune system/inflammation connection** 10
- How SKYRIZI works** 11
- Use and Important Safety Information** 12

SKYRIZI USE¹

SKYRIZI is a prescription medicine used to treat moderate to severe ulcerative colitis in adults.

SAFETY CONSIDERATIONS¹

Do not use if you are allergic to SKYRIZI. SKYRIZI may cause serious side effects, including serious allergic reactions, an increased risk of infections, and liver problems.

- Stop using SKYRIZI and get emergency medical help right away if experiencing symptoms of a serious allergic reaction.
- Before starting treatment, your doctor should check for infections and tuberculosis. Tell your doctor right away about any infections or symptoms of infection and about planned or recent vaccines.
- Liver problems may happen while being treated for Crohn's disease or ulcerative colitis that can lead to hospitalization. Your doctor will do liver blood tests before and during treatment and may stop SKYRIZI if liver problems develop.

Please see Use and Important Safety Information.

Please see full Prescribing Information, including Medication Guide, at https://www.rxabbvie.com/pdf/skyrizi_pi.pdf and discuss with your doctor.

To learn about AbbVie's privacy practices and your privacy choices, visit <https://abbv.ie/corpprivacy>.

Skyrizi® COMPLETE

Skyrizi®
risankizumab-rzaa



TREATING MODERATE TO SEVERE UC WITH SKYRIZI

In clinical trials, SKYRIZI was proven to help deliver:

- **Fewer bowel movements** and **bloody stools** in only **4 weeks**
- **Visible colon lining repair** at **12 weeks** and at **1 year**
- **Remission** at **12 weeks** and at **1 year**



Have questions? Reach out to your Skyrizi Complete Nurse Ambassador* at **1.866.SKYRIZI** (1.866.759.7494).†

*Nurse Ambassadors are provided by AbbVie and do not work under the direction of your health care professional (HCP) or give medical advice. They are trained to direct patients to their HCP for treatment-related advice, including further referrals.

†Help is available Monday through Friday, from 8:00 AM to 8:00 PM ET, except for holidays.

SKYRIZI USE¹

SKYRIZI is a prescription medicine used to treat moderate to severe ulcerative colitis in adults.

SAFETY CONSIDERATIONS¹

Do not use if you are allergic to SKYRIZI. SKYRIZI may cause serious side effects, including serious allergic reactions, an increased risk of infections, and liver problems.

- Stop using SKYRIZI and get emergency medical help right away if experiencing symptoms of a serious allergic reaction.
- Before starting treatment, your doctor should check for infections and tuberculosis. Tell your doctor right away about any infections or symptoms of infection and about planned or recent vaccines.
- Liver problems may happen while being treated for Crohn's disease or ulcerative colitis that can lead to hospitalization. Your doctor will do liver blood tests before and during treatment and may stop SKYRIZI if liver problems develop.

Please see Use and Important Safety Information.

Please see full Prescribing Information, including Medication Guide, at https://www.rxabbvie.com/pdf/skyrizi_pi.pdf and discuss with your doctor.

To learn about AbbVie's privacy practices and your privacy choices, visit <https://abbv.ie/corpprivacy>.

Skyrizi[®] COMPLETE

Skyrizi[®]
risankizumab-rzaa

MEET YOUR SKYRIZI COMPLETE NURSE AMBASSADOR

Feeling confident and prepared means knowing the right steps to take with your prescribed SKYRIZI treatment plan. Let your Nurse Ambassador provide expertise that can help you get started on SKYRIZI. They will guide you and provide support as you start and stay on track with your treatment. Here's how:

- ✓ **Verifying** your health insurance coverage
- ✓ **Explaining** the specialty pharmacy process
- ✓ **Finding** potential savings options for your SKYRIZI infusions and On-Body Injector (OBI)
- ✓ **Making** sure you're ready for each of your 3 infusion appointments and showing you how to inject the right way, either in person or virtually, after initial training by your healthcare provider
- ✓ **Helping** you understand your SKYRIZI treatment so you can get started and move forward



We can help

Discover all the ways your Nurse Ambassador can provide support throughout your SKYRIZI treatment. Just call **1.866.SKYRIZI** (1.866.759.7494).

SKYRIZI USE¹

SKYRIZI is a prescription medicine used to treat moderate to severe ulcerative colitis in adults.

SAFETY CONSIDERATIONS¹

Do not use if you are allergic to SKYRIZI. SKYRIZI may cause serious side effects, including serious allergic reactions, an increased risk of infections, and liver problems.

- Stop using SKYRIZI and get emergency medical help right away if experiencing symptoms of a serious allergic reaction.
- Before starting treatment, your doctor should check for infections and tuberculosis. Tell your doctor right away about any infections or symptoms of infection and about planned or recent vaccines.
- Liver problems may happen while being treated for Crohn's disease or ulcerative colitis that can lead to hospitalization. Your doctor will do liver blood tests before and during treatment and may stop SKYRIZI if liver problems develop.

Please see Use and Important Safety Information.

Please see full Prescribing Information, including Medication Guide, at https://www.rxabbvie.com/pdf/skyrizi_pi.pdf and discuss with your doctor.

To learn about AbbVie's privacy practices and your privacy choices, visit <https://abbv.ie/corpprivacy>.

Skyrizi[®] COMPLETE

Skyrizi[®]
risankizumab-rzaa

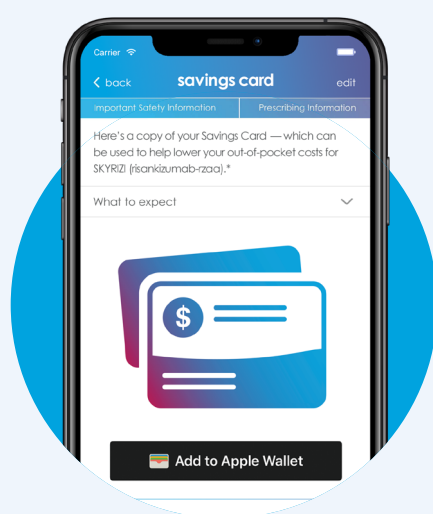
WE'RE HERE TO HELP YOU **SAVE**

Paying for medicine shouldn't get in the way of your SKYRIZI treatment. Skyrizi Complete may be able to help, regardless of your healthcare coverage.

Here are 3 ways that may help lower out-of-pocket costs:

- 1 Use the Skyrizi Complete Savings Card** and you could pay as little as \$0* per treatment, if eligible.
- 2 Submit rebates.*** If eligible, submit reimbursement claims if you have a SKYRIZI infusion bill or have already paid out of pocket for infusion or OBI prescriptions, infusion administration, or lab tests. Find out more at **[Skyrizi.com/Gastro-CompleteRebate](https://www.skyrizi.com/Gastro-CompleteRebate)**.
- 3 Talk to your Nurse Ambassador** to review your insurance coverage and find potential savings, even if your insurance changes while you're taking SKYRIZI. Just call **1.866.SKYRIZI** (1.866.759.7494).

*For eligible, commercially insured patients only. Please see **Terms and Conditions**.



Use the Skyrizi Complete App to access your digital Savings Card

Add it to your mobile wallet so you're always ready to pay for your treatment.



Skyrizi Complete Savings Card Terms and Conditions

Eligibility: Available to patients with commercial insurance coverage for **SKYRIZI® (risankizumab-rzaa)** who meet eligibility criteria. This co-pay assistance program is not available to patients receiving prescription reimbursement under any federal, state, or government-funded insurance programs (for example, Medicare [including Part D], Medicare Advantage, Medigap, Medicaid, TRICARE, Department of Defense, or Veterans Affairs programs) or where prohibited by law. Offer subject to change or termination without notice. Restrictions, including monthly maximums, may apply. This is not health insurance. **For full Terms and Conditions, visit www.skyrizi.com/savings-card-terms or call 1.866.SKYRIZI for additional information. To learn about AbbVie's privacy practices and your privacy choices, visit <https://abbv.ie/corpprivacy>.**

SKYRIZI USE¹

SKYRIZI is a prescription medicine used to treat moderate to severe ulcerative colitis in adults.

SAFETY CONSIDERATIONS¹

Do not use if you are allergic to SKYRIZI. SKYRIZI may cause serious side effects, including serious allergic reactions, an increased risk of infections, and liver problems.

- Stop using SKYRIZI and get emergency medical help right away if experiencing symptoms of a serious allergic reaction.
- Before starting treatment, your doctor should check for infections and tuberculosis. Tell your doctor right away about any infections or symptoms of infection and about planned or recent vaccines.
- Liver problems may happen while being treated for Crohn's disease or ulcerative colitis that can lead to hospitalization. Your doctor will do liver blood tests before and during treatment and may stop SKYRIZI if liver problems develop.

Please see Use and Important Safety Information.

Please see full [Prescribing Information](https://www.rxabbvie.com/pdf/skyrizi_pi.pdf), including [Medication Guide](https://www.rxabbvie.com/pdf/skyrizi_pi.pdf), at https://www.rxabbvie.com/pdf/skyrizi_pi.pdf and discuss with your doctor.

To learn about AbbVie's privacy practices and your privacy choices, visit <https://abbv.ie/corpprivacy>.

Skyrizi COMPLETE

Skyrizi[®]
risankizumab-rzaa

GET HELP **STAYING ON TRACK** WITH THE SKYRIZI COMPLETE APP

The App puts helpful resources right in the palm of your hand.



Watch infusion and injection videos to see what to expect



Access your Savings Card, if eligible, and add it to your mobile wallet for quick and convenient access

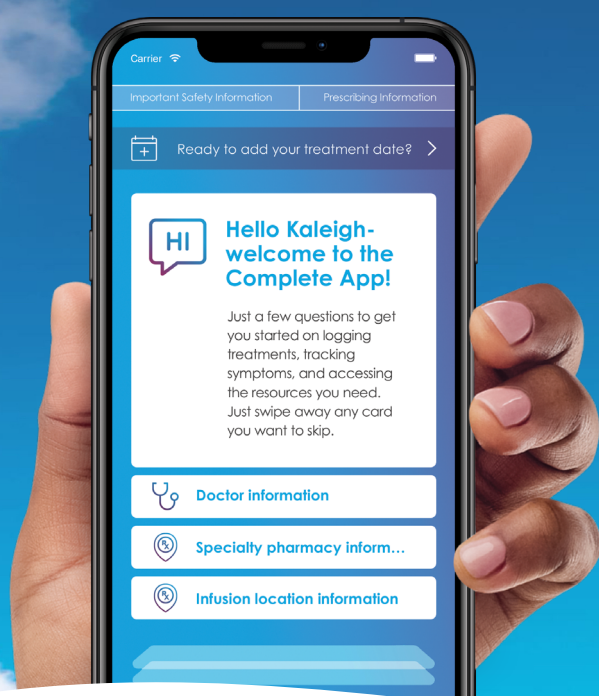


Submit rebates.* If eligible, you can submit claims if you have an infusion bill or have already paid out of pocket



Log injections, set treatment reminders, and track symptoms to share with your doctor

*For eligible, commercially insured patients only. Please see **Terms and Conditions**.



Download the App



Text **APP** to **29279** to receive a link to download the App.

Message and data rates may apply. By texting APP to 29279, you agree to AbbVie's **Terms and Conditions** and **Privacy Notice**.

Stay connected with text messages



Get treatment reminders and notifications when it's time to choose a health insurance plan during open enrollment. **Sign up now at [SkyriziComplete.com/Text](https://www.skyrizi.com/Text).**

SKYRIZI USE¹

SKYRIZI is a prescription medicine used to treat moderate to severe ulcerative colitis in adults.

SAFETY CONSIDERATIONS¹

Do not use if you are allergic to SKYRIZI. SKYRIZI may cause serious side effects, including serious allergic reactions, an increased risk of infections, and liver problems.

- Stop using SKYRIZI and get emergency medical help right away if experiencing symptoms of a serious allergic reaction.
- Before starting treatment, your doctor should check for infections and tuberculosis. Tell your doctor right away about any infections or symptoms of infection and about planned or recent vaccines.
- Liver problems may happen while being treated for Crohn's disease or ulcerative colitis that can lead to hospitalization. Your doctor will do liver blood tests before and during treatment and may stop SKYRIZI if liver problems develop.

Please see Use and Important Safety Information.

Please see full [Prescribing Information](https://www.rxabbvie.com/pdf/skyrizi_pi.pdf), including [Medication Guide](https://www.rxabbvie.com/pdf/skyrizi_pi.pdf), at https://www.rxabbvie.com/pdf/skyrizi_pi.pdf and discuss with your doctor.

To learn about AbbVie's privacy practices and your privacy choices, visit <https://abbv.ie/corpprivy>.

Skyrizi COMPLETE

Skyrizi[®]
risankizumab-rzaa

UNDERSTANDING YOUR SKYRIZI TREATMENT

You don't have to do it on your own. Skyrizi Complete is here for you, with helpful information about SKYRIZI infusions and the OBI. You can:

- **Watch** infusion and injection videos
- **Understand** what to expect before, during, and after your infusions
- **Find** resources that can help you make the transition from SKYRIZI infusions to the OBI

Learn more about the infusion process at [SKYRIZITreatment.com](https://www.skyrizitreatment.com) and more about the OBI at [SKYRIZITraining.com](https://www.skyrizitraining.com).

Reach out to your dedicated partner

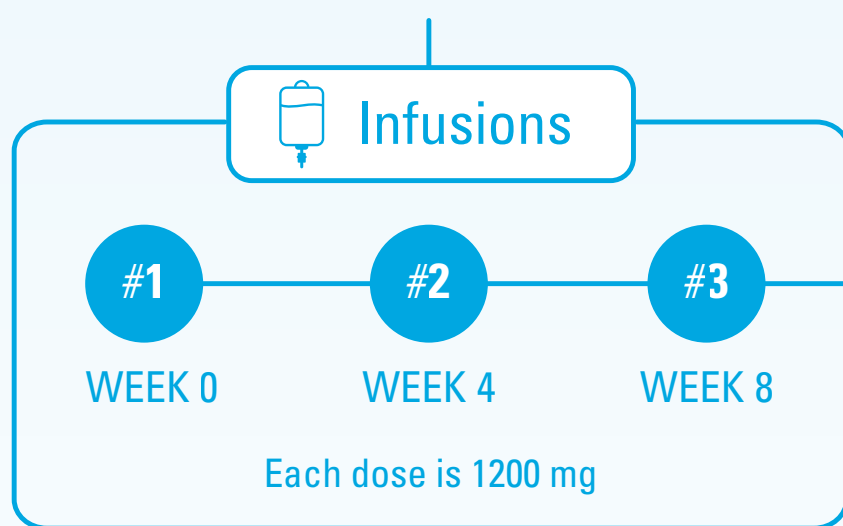


Discover all the ways your Nurse Ambassador can provide ongoing support throughout your SKYRIZI treatment. Just call **1.866.SKYRIZI** (1.866.759.7494). Or get answers anytime with 24/7 Live Chat.

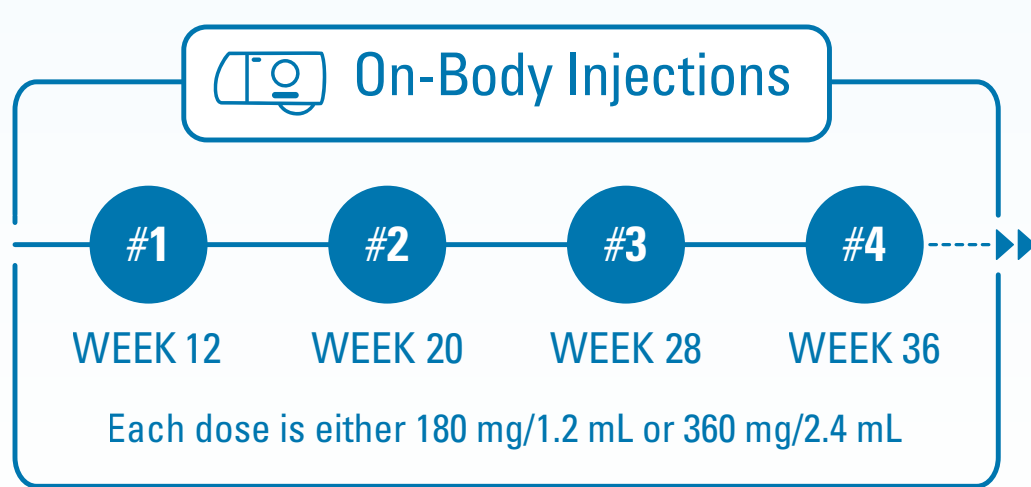
Understanding your SKYRIZI treatment schedule



Your doctor prescribed **SKYRIZI**



SKYRIZI treatment for ulcerative colitis starts with 3 doses through a vein in the arm (intravenous [IV] infusions); each dose is taken 4 weeks apart.



Your doctor will decide what maintenance dose is right for you.

Maintenance subcutaneous injections will start 4 weeks after your third infusion; each dose is taken 8 weeks apart. After receiving training from your healthcare provider on how to inject SKYRIZI, you can administer your treatment at home using the prefilled cartridge with the SKYRIZI OBI.

SKYRIZI USE¹

SKYRIZI is a prescription medicine used to treat moderate to severe ulcerative colitis in adults.

SAFETY CONSIDERATIONS¹

Do not use if you are allergic to SKYRIZI. SKYRIZI may cause serious side effects, including serious allergic reactions, an increased risk of infections, and liver problems.

- Stop using SKYRIZI and get emergency medical help right away if experiencing symptoms of a serious allergic reaction.
- Before starting treatment, your doctor should check for infections and tuberculosis. Tell your doctor right away about any infections or symptoms of infection and about planned or recent vaccines.
- Liver problems may happen while being treated for Crohn's disease or ulcerative colitis that can lead to hospitalization. Your doctor will do liver blood tests before and during treatment and may stop SKYRIZI if liver problems develop.

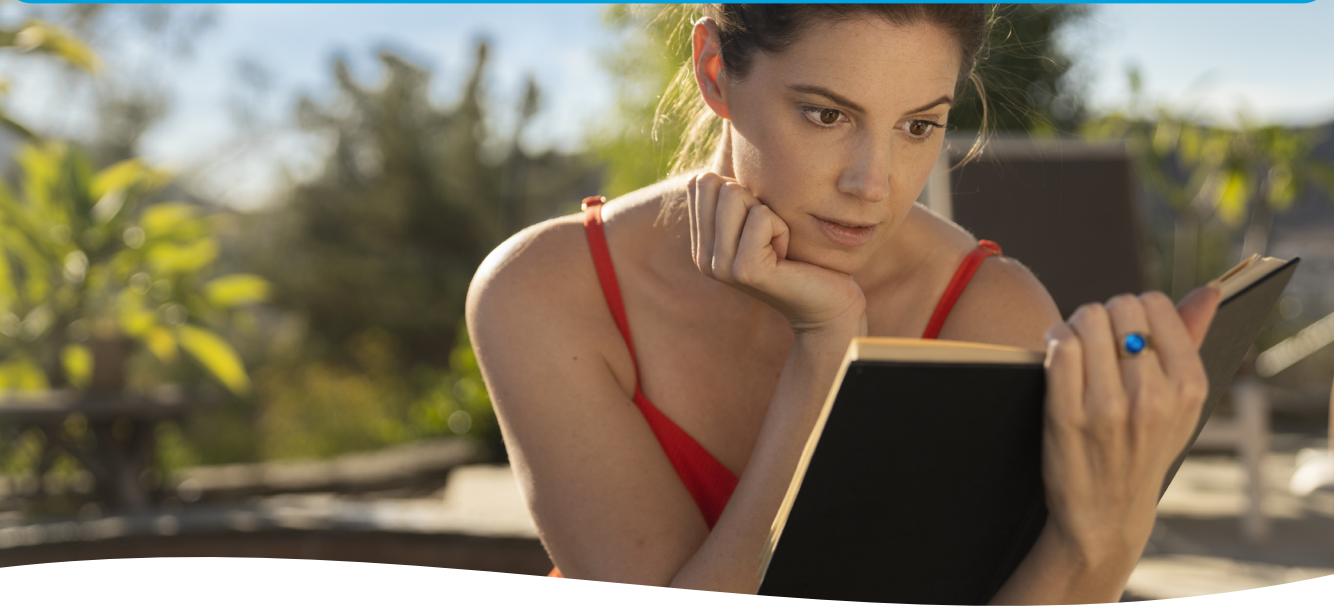
Please see Use and Important Safety Information.

Please see full [Prescribing Information](https://www.rxabbvie.com/pdf/skyrizi_pi.pdf), including [Medication Guide](https://www.rxabbvie.com/pdf/skyrizi_pi.pdf), at https://www.rxabbvie.com/pdf/skyrizi_pi.pdf and discuss with your doctor.

To learn about AbbVie's privacy practices and your privacy choices, visit <https://abbv.ie/corpprivacy>.

Skyrizi COMPLETE

Skyrizi[®]
risankizumab-rzaa



UNDERSTANDING A COMPLEX CONDITION

The more you know about UC, the easier it may be to understand your condition. This can also help you explain your experience to others.



A CHRONIC, INFLAMMATORY DISEASE

UC is a chronic condition, which means symptoms may keep coming back and could last a long time. UC is also progressive, meaning symptoms may begin slowly and get worse over time.



WHERE IT STRIKES

UC can affect any part of the **large intestine**, but it usually begins in the **rectum**.



WHAT CAUSES UC?

The exact cause of UC is unknown, but it can be influenced by many different factors, including a person's **immune system, genetics, or other environmental factors**.



AN UNPREDICTABLE CONDITION

UC varies between periods when its symptoms are active (called flare-ups) and periods when there are few or no symptoms at all (remission). This may differ from person to person and change over time.



WHO IS AT RISK?

Anyone can get UC, but there are risk factors that may increase your chances. Talk to your doctor to learn more about possible risk factors.



AGE

UC can occur at any age, but most people develop it **between the ages of 15 and 30**. Others may not develop the disease until about age 60.



FAMILY HISTORY

People are at higher risk if they **have a parent, sibling, or child with the disease**. Up to 14% of those with UC have a blood relative who has inflammatory bowel disease (IBD).



ETHNICITY

UC can affect any ethnic group. **Caucasians and people of Jewish descent** are at the highest risk.



UC SYMPTOMS

The signs and symptoms of UC may include:



**BLOODY STOOLS AND
DIARRHEA**



**FREQUENT BATHROOM
TRIPS**



ABDOMINAL PAIN



SUDDEN ACCIDENTS



FATIGUE

THE IMMUNE SYSTEM/ INFLAMMATION CONNECTION

Normally, the immune system protects your body from disease by attacking bacteria and viruses. But with UC, the immune system becomes overactive.



IMMUNE SYSTEM OVERREACTS

While the exact cause of UC is unknown, it is believed that an overactive immune system can cause excess inflammation. Too much inflammation can lead to colon lining damage and UC symptoms.



INFLAMMATORY RESPONSE

This sets off a chain reaction causing activation of other cells and proteins involved in the inflammatory response, such as IL-23.



INFLAMMATION

The result is chronic inflammation that can cause frequent diarrhea, abdominal pain, and other UC symptoms.

HOW SKYRIZI WORKS IN YOUR BODY

While the exact cause of UC is unknown, an overactive immune system could be a source.

YOUR BODY MAY PRODUCE TOO MUCH OF A PROTEIN CALLED IL-23.

IL-23 is one of several proteins that may contribute to excess inflammation in the body. When you have UC, IL-23 can contribute to excess inflammation in the colon. This can lead to colon lining damage and/or UC symptoms.

SKYRIZI is designed to work with your immune system, attaching specifically to the IL-23 protein that can cause inflammation. This is how **SKYRIZI can help reduce inflammation** inside the body that may lead to the symptoms of UC.



SEE THE SCIENCE BEHIND SKYRIZI

Watch a video to find out how SKYRIZI works in your body.

SKYRIZI USE¹

SKYRIZI is a prescription medicine used to treat moderate to severe ulcerative colitis in adults.

SAFETY CONSIDERATIONS¹

Do not use if you are allergic to SKYRIZI. SKYRIZI may cause serious side effects, including serious allergic reactions, an increased risk of infections, and liver problems.

- Stop using SKYRIZI and get emergency medical help right away if experiencing symptoms of a serious allergic reaction.
- Before starting treatment, your doctor should check for infections and tuberculosis. Tell your doctor right away about any infections or symptoms of infection and about planned or recent vaccines.
- Liver problems may happen while being treated for Crohn's disease or ulcerative colitis that can lead to hospitalization. Your doctor will do liver blood tests before and during treatment and may stop SKYRIZI if liver problems develop.

Please see Use and Important Safety Information.

Please see full Prescribing Information, including Medication Guide, at https://www.rxabbvie.com/pdf/skyrizi_pi.pdf and discuss with your doctor.

To learn about AbbVie's privacy practices and your privacy choices, visit <https://abbv.ie/corpprivacy>.

Skyrizi[®] COMPLETE

Skyrizi[®]
risankizumab-rzaa

USE AND IMPORTANT SAFETY INFORMATION

ABOUT SKYRIZI® (risankizumab-rzaa)¹

SKYRIZI USE¹

SKYRIZI is a prescription medicine used to treat moderate to severe ulcerative colitis in adults.

IMPORTANT SAFETY INFORMATION¹

What is the most important information I should know about SKYRIZI® (risankizumab-rzaa)?

SKYRIZI is a prescription medicine that may cause serious side effects, including:

Serious allergic reactions:

- Stop using SKYRIZI and get emergency medical help right away if you get any of the following symptoms of a serious allergic reaction:
 - fainting, dizziness, feeling lightheaded (low blood pressure)
 - swelling of your face, eyelids, lips, mouth, tongue, or throat
 - trouble breathing or throat tightness
 - chest tightness
 - skin rash, hives
 - itching

Infections:

SKYRIZI may lower the ability of your immune system to fight infections and may increase your risk of infections. Your healthcare provider should check you for infections and tuberculosis (TB) before starting treatment with SKYRIZI and may treat you for TB before you begin treatment with SKYRIZI if you have a history of TB or have active TB. Your healthcare provider should watch you closely for signs and symptoms of TB during and after treatment with SKYRIZI.

- Tell your healthcare provider right away if you have an infection or have symptoms of an infection, including:
 - fever, sweats, or chills
 - cough
 - shortness of breath
 - blood in your mucus (phlegm)
 - muscle aches
 - warm, red, or painful skin or sores on your body different from your psoriasis
 - weight loss
 - diarrhea or stomach pain
 - burning when you urinate or urinating more often than normal

Do not use SKYRIZI if you are allergic to risankizumab-rzaa or any of the ingredients in SKYRIZI. See the Medication Guide or Consumer Brief Summary for a complete list of ingredients.

Before using SKYRIZI, tell your healthcare provider about all of your medical conditions, including if you:

- have any of the conditions or symptoms listed in the section **“What is the most important information I should know about SKYRIZI?”**
- have an infection that does not go away or that keeps coming back.
- have TB or have been in close contact with someone with TB.
- have recently received or are scheduled to receive an immunization (vaccine). Medicines that interact with the immune system may increase your risk of getting an infection after receiving live vaccines. You should avoid receiving live vaccines right before, during, or right after treatment with SKYRIZI. Tell your healthcare provider that you are taking SKYRIZI before receiving a vaccine.
- are pregnant or plan to become pregnant. It is not known if SKYRIZI can harm your unborn baby.
- are breastfeeding or plan to breastfeed. It is not known if SKYRIZI passes into your breast milk.
- become pregnant while taking SKYRIZI. You are encouraged to enroll in the Pregnancy Registry, which is used to collect information about the health of you and your baby. Talk to your healthcare provider or call 1-877-302-2161 to enroll in this registry.

Tell your healthcare provider about all the medicines you take, including prescription and over-the-counter medicines, vitamins, and herbal supplements.

What are the possible side effects of SKYRIZI?

SKYRIZI may cause serious side effects. See “What is the most important information I should know about SKYRIZI?”

Liver problems may happen while being treated for Crohn’s disease or ulcerative colitis:

A person with Crohn’s disease who received SKYRIZI through a vein in the arm developed changes in liver blood tests with a rash that led to hospitalization. Your healthcare provider will do blood tests to check your liver before, during, and at least up to 12 weeks of treatment, and may stop treatment with SKYRIZI if you develop liver problems. Tell your healthcare provider right away if you notice any of the following symptoms: unexplained rash, nausea, vomiting, stomach (abdominal) pain, tiredness (fatigue), loss of appetite, yellowing of the skin and eyes (jaundice), and dark urine.

The most common side effects of SKYRIZI in people treated for Crohn’s disease and ulcerative colitis include:

upper respiratory infections, headache, joint pain, stomach (abdominal) pain, injection site reactions, low red blood cells (anemia), fever, back pain, urinary tract infection, and rash.

These are not all the possible side effects of SKYRIZI. Call your doctor for medical advice about side effects.

Use SKYRIZI exactly as your healthcare provider tells you to use it.

SKYRIZI (risankizumab-rzaa) is available in a 600 mg/10 mL vial for intravenous infusion and a 180 mg/1.2 mL or 360 mg/2.4 mL single-dose prefilled cartridge with on-body injector.

You are encouraged to report negative side effects of prescription drugs to the FDA. Visit www.fda.gov/medwatch or call 1-800-FDA-1088.

If you are having difficulty paying for your medicine, AbbVie may be able to help. Visit AbbVie.com/PatientAccessSupport to learn more.

Reference: 1. SKYRIZI [package insert]. North Chicago, IL: AbbVie Inc.

US-SKZG-240177

Please see full Prescribing Information, including Medication Guide, at https://www.rxabbvie.com/pdf/skyrizi_pi.pdf and discuss with your doctor.

To learn about AbbVie’s privacy practices and your privacy choices, visit <https://abbv.ie/corpprivacy>.

abbvie

©2024 AbbVie. All rights reserved.
SKYRIZI® and its design are registered trademarks of AbbVie Biotechnology Ltd.

Skyrizi® COMPLETE

Skyrizi®
risankizumab-rzaa